

Residential Care

# Room Types



# Fullarton

## Shared



- Electronic high/low adjustable bed with pressure relieving mattress
- Bedside table, built-in wardrobe, lockable storage, and visitor chair
- Nurse-call points, telephone connection capability, quality lighting and window dressings
- Some rooms equipped with ceiling tracks to assist with mobility needs
- Individually controlled reverse cycle air conditioning for heating and cooling
- 3-in-1 bathroom ducted heat-light and exhaust fan for ultimate comfort
- Some rooms have direct access to beautiful courtyards/internal gardens
- Designed to maintain independence and maximise safety and security

# Fullarton

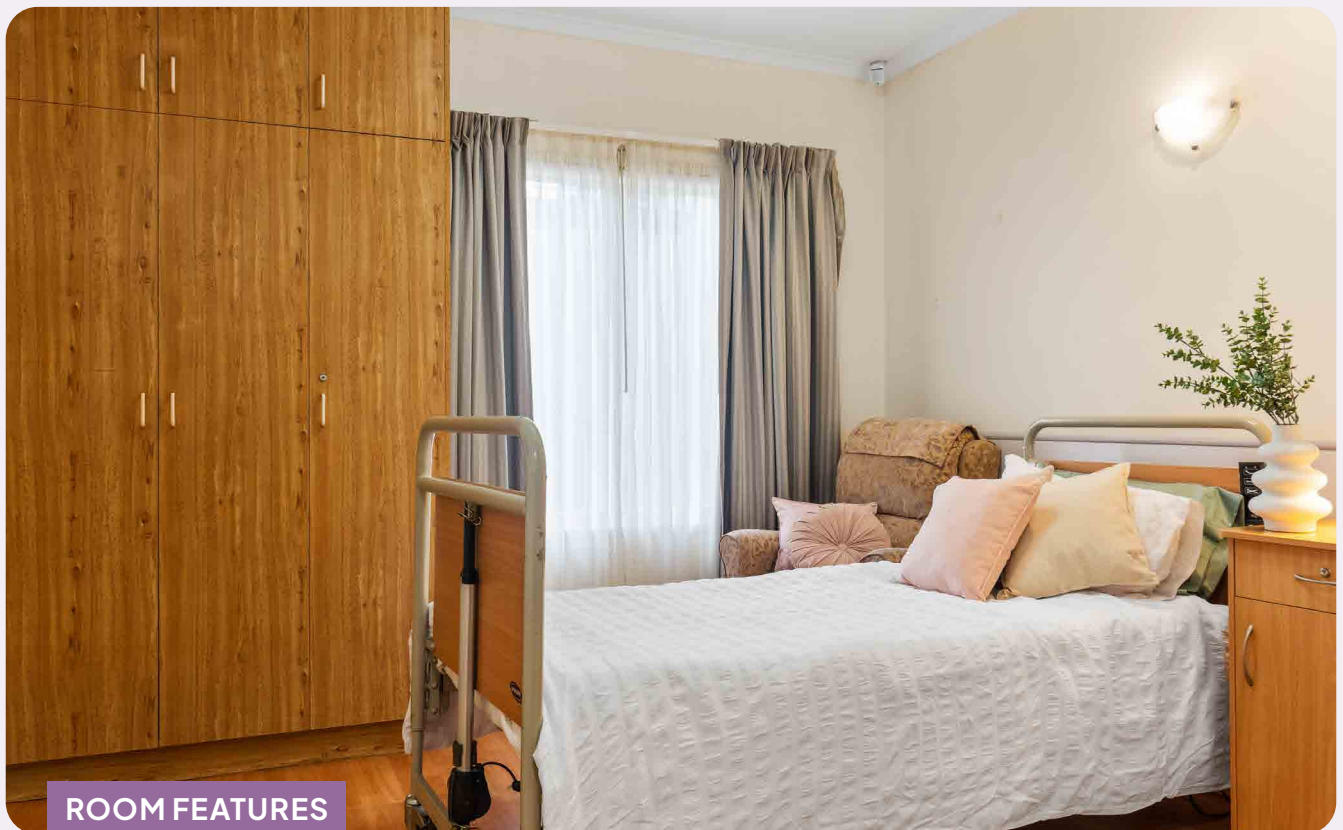
## Single Shared Ensuite



- Electronic high/low adjustable bed with pressure relieving mattress
- Bedside table, built-in wardrobe, lockable storage, and visitor chair
- Nurse-call points, telephone connection capability, quality lighting and window dressings
- Some rooms equipped with ceiling tracks to assist with mobility needs
- Individually controlled reverse cycle air conditioning for heating and cooling
- 3-in-1 bathroom ducted heat-light and exhaust fan for ultimate comfort
- Some rooms have direct access to beautiful courtyards/internal gardens
- Designed to maintain independence and maximise safety and security

# Fullarton

## Deluxe Single



- Electronic high/low adjustable bed with pressure relieving mattress
- Bedside table, built-in wardrobe, lockable storage, and visitor chair
- Nurse-call points, telephone connection capability, quality lighting and window dressings
- Some rooms equipped with ceiling tracks to assist with mobility needs
- Individually controlled reverse cycle air conditioning for heating and cooling
- 3-in-1 bathroom ducted heat-light and exhaust fan for ultimate comfort
- Some rooms have direct access to beautiful courtyards/internal gardens
- Designed to maintain independence and maximise safety and security

# Fullarton

## Premium Single



- Electronic high/low adjustable bed with pressure relieving mattress
- Bedside table, built-in wardrobe, lockable storage, and visitor chair
- Nurse-call points, telephone connection capability, quality lighting and window dressings
- Some rooms equipped with ceiling tracks to assist with mobility needs
- Individually controlled reverse cycle air conditioning for heating and cooling
- 3-in-1 bathroom ducted heat-light and exhaust fan for ultimate comfort
- Some rooms have direct access to beautiful courtyards/internal gardens
- Designed to maintain independence and maximise safety and security

# Fullarton

## Superior Single



- Electronic high/low adjustable bed with pressure relieving mattress
- Bedside table, built-in wardrobe, lockable storage, and visitor chair
- Nurse-call points, telephone connection capability, quality lighting and window dressings
- Some rooms equipped with ceiling tracks to assist with mobility needs
- Individually controlled reverse cycle air conditioning for heating and cooling
- 3-in-1 bathroom ducted heat-light and exhaust fan for ultimate comfort
- Some rooms have direct access to beautiful courtyards/internal gardens
- Designed to maintain independence and maximise safety and security

# Fullarton

## Grand Single



- Electronic high/low adjustable bed with pressure relieving mattress
- Bedside table, built-in wardrobe, lockable storage, and visitor chair
- Nurse-call points, telephone connection capability, quality lighting and window dressings
- Some rooms equipped with ceiling tracks to assist with mobility needs
- Individually controlled reverse cycle air conditioning for heating and cooling
- 3-in-1 bathroom ducted heat-light and exhaust fan for ultimate comfort
- Some rooms have direct access to beautiful courtyards/internal gardens
- Designed to maintain independence and maximise safety and security

## Fullarton

Effective 1st October to 31st December 2024

ROOM TYPE	ROOM SIZE (Average) m <sup>2</sup>	OPTION 1 Maximum Refundable Accommodation Deposit (RAD) – Room Price	OPTION 2 Maximum Daily Accommodation Payment (DAP)	OPTION 3 Combination Payment. MPIR 8.38%	
				RAD @ 50% Deposit	DAP if 50% RAD paid
Shared	24	\$295,000	\$67.72	\$147,500	\$33.86
Single Shared Ensuite	13.5	\$355,000	\$81.50	\$177,500	\$40.75
Deluxe Single	13	\$449,000	\$103.08	\$224,500	\$51.54
Premium Single Shared Ensuite	21	\$472,000	\$108.36	\$236,000	\$54.18
Premium Single	16	\$520,000	\$119.38	\$260,000	\$59.69
Superior Single	25	\$590,000	\$135.45	\$295,000	\$67.72
Grand Single	35	\$650,000	\$149.23	\$325,000	\$74.61

\*Room price is subject to change without notice. Please check [myagedcare](https://myagedcare.com.au) website for current prices.

Please note that all the LHG facilities are non-smoking.



# Glynde

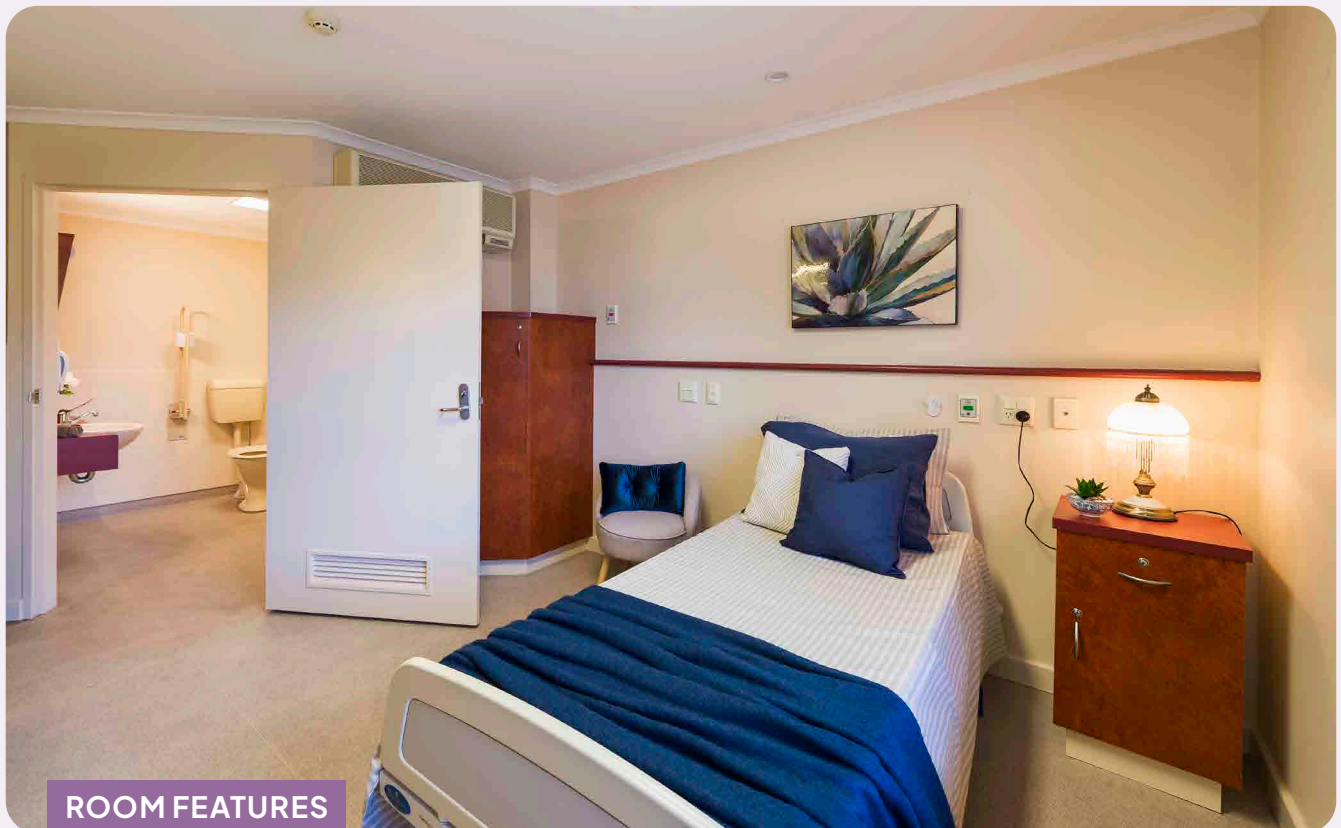
## Single Room with Ensuite – Premium



- Refurbished room with quality fixtures and fittings
- Electronic high/low adjustable bed with pressure-relieving mattress
- Bedside table
- Wi-Fi
- Built-in wardrobe
- Lockable storage
- Visitor chair
- Nurse-call points
- Telephone connection capability
- Quality lighting and window dressings
- Ceiling tracks to assist with mobility needs
- Individually controlled reverse cycle air conditioning
- 3-in-1 bathroom ducted heat-light and exhaust fan
- View of beautiful courtyards/ internal gardens
- Flat screen television set installed
- Designed for independence and maximised safety and security
- Access to large communal areas

# Glynde

## Single Room with Ensuite – Deluxe



- Room with quality fixtures and fittings
- Electronic high/low adjustable bed with pressure-relieving mattress
- Bedside table
- Wi-Fi
- Built-in wardrobe
- Lockable storage
- Visitor chair
- Nurse-call points
- Telephone connection capability
- Quality lighting and window dressings
- Large or bay windows for a nice view
- Individually controlled reverse cycle air conditioning
- 3-in-1 bathroom ducted heat-light and exhaust fan
- Flat screen television set installed
- Designed for independence and maximised safety and security
- Access to large communal areas

# Glynde

## Single Room without Ensuite



### ROOM FEATURES

- Refurbished room with quality fixtures and fittings
- Electronic high/low adjustable bed with pressure-relieving mattress
- Bedside table
- Wi-Fi
- Built-in wardrobe
- Lockable storage
- Visitor chair
- Nurse-call points
- Telephone connection capability
- Quality lighting and window dressings
- Ceiling tracks to assist with mobility needs
- Individually controlled reverse cycle air conditioning
- Spacious communal bathrooms to accommodate lifters and specialized equipment
- View of beautiful courtyards/ internal gardens
- Flat screen television set installed
- Designed for independence and maximised safety and security
- Access to large communal areas
- Designed to provide specialised care for severe cognitive and/or mobility loss

## Glynde

Effective 1st October to 31st December 2024

ROOM TYPE	ROOM SIZE (Average) m <sup>2</sup>	OPTION 1 Maximum Refundable Accommodation Deposit (RAD) – Room Price	OPTION 2 Maximum Daily Accommodation Payment (DAP)	OPTION 3 Combination Payment. MPIR 8.38%	
				RAD @ 50% Deposit	DAP if 50% RAD paid
Single Room with Ensuite – Premium	21	\$625,000	\$143.49	\$312,500	\$71.74
Single Room with Ensuite – Deluxe	16	\$510,000	\$117.09	\$255,000	\$58.54
Single Room without Ensuite	17	\$455,000	\$104.46	\$227,500	\$52.23

\* Room price is subject to change without notice. Please check [myagedcare](#) website for current prices.

Please note that all the LHG facilities are non-smoking.

# Hope Valley

## Single Room with Ensuite – Premium (Barossa and McLaren Rooms)



- Electronic high/low adjustable bed with pressure relieving mattress
- Bedside table, built-in wardrobe, lockable storage, and visitor chair
- Nurse-call points, telephone connection capability, quality lighting and window dressings
- Some rooms equipped with ceiling tracks to assist with mobility needs
- Individually controlled reverse cycle air conditioning for heating and cooling
- 3-in-1 bathroom ducted heat-light and exhaust fan for ultimate comfort
- Some rooms have direct access to beautiful courtyards/internal gardens
- Designed to maintain independence and maximise safety and security

# Hope Valley

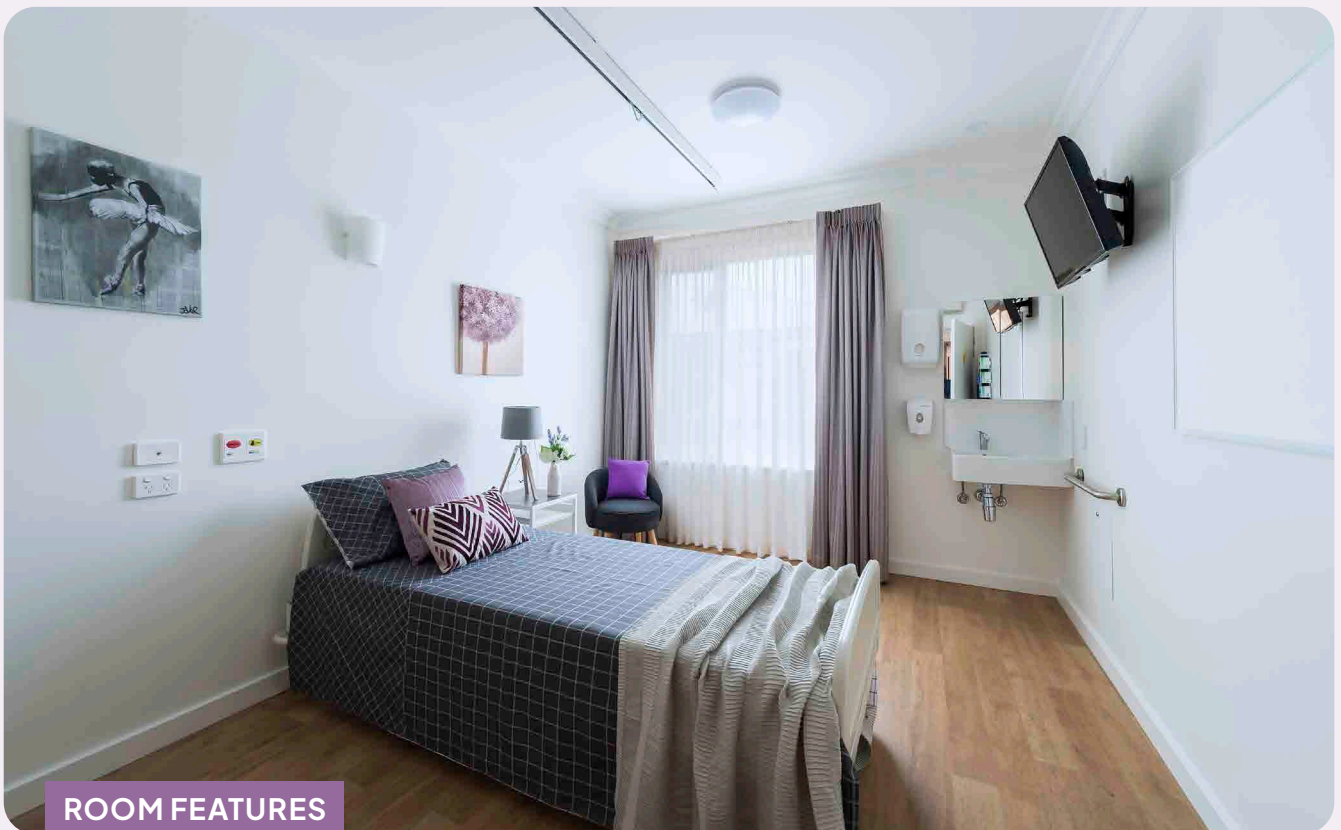
## Single Room with Ensuite – Standard (Coonawara Rooms - Memory Support Unit)



- Electronic high/low adjustable bed with pressure relieving mattress
- Bedside table, built-in wardrobe, lockable storage, and visitor chair
- Nurse-call points, telephone connection capability, quality lighting and window dressings
- Some rooms equipped with ceiling tracks to assist with mobility needs
- Individually controlled reverse cycle air conditioning for heating and cooling
- 3-in-1 bathroom ducted heat-light and exhaust fan for ultimate comfort
- Some rooms have direct access to beautiful courtyards/internal gardens
- Designed to maintain independence and maximise safety and security

# Hope Valley

## Single Room without Ensuite (The Vines)



### ROOM FEATURES

- Electronic high/low adjustable bed with pressure relieving mattress
- Bedside table, built-in wardrobe, lockable storage, and visitor chair
- Nurse-call points, telephone connection capability, good lighting and standard window dressings
- Some rooms recently renovated and equipped with ceiling tracks to assist with mobility needs
- Centrally controlled reverse cycle air conditioning for heating and cooling
- Access to communal bathrooms with specialized equipment
- Spacious communal bathrooms with heat lamps and exhaust fans
- Designed to maintain and maximize safety and security

# Hope Valley

Effective 1st October to 31st December 2024

ROOM TYPE	ROOM SIZE (Average) m <sup>2</sup>	OPTION 1 Maximum Refundable Accommodation Deposit (RAD) – Room Price	OPTION 2 Maximum Daily Accommodation Payment (DAP)	OPTION 3 Combination Payment. MPIR 8.38%	
				RAD @ 50% Deposit	DAP if 50% RAD paid
<b>Single Room with Ensuite – Premium</b> (All rooms in 'Barossa' & 'McLaren')	20	\$500,000	\$114.79	\$250,000	\$57.39
<b>Single Room with Ensuite – Standard</b> (All rooms in 'Coonawara')	18	\$500,000	\$114.79	\$250,000	\$57.39
<b>Single Room without Ensuite</b> (All rooms in 'The Vines')	16	\$400,000	\$91.83	\$200,000	\$45.91

\* Room price is subject to change without notice. Please check [myagedcare](https://www.myagedcare.com.au) website for current prices.

Please note that all the LHG facilities are non-smoking.